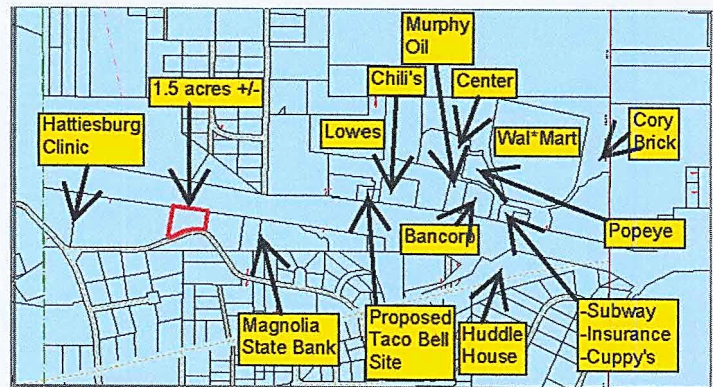
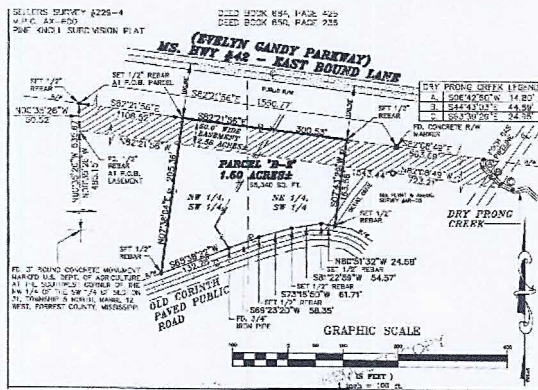


LONDON AND STETELMAN REALTORS

3906 Hardy Street, Hattiesburg, MS 39402

Phone (601) 268-8770 Fax (601) 268-8871

<http://www.londonandstetelman.com>



Call office for larger layout.

Evelyn Gandy Pkwy

Petal, MS. 39465

Total Size: 1.5 acres +/-
Highway Frontage: 300.53' +/-

- 1) Great location in East Petal. 1.5 acres more or less..
- 2) The property is lying between Magnolia State Bank and Hattiesburg Clinic.
- 3) Lowes Building and Home Supply lies north of the property and Chili's lies to the east of the site. A Taco Bell Restuarant has contracted a corner site just east of the subject along Brinker Dr. and Evelyn Gandy Pkwy.
- 4) Site is zoned C-2 Commercial, all utilities are available.

Area and Statistical information: www.the.adp.com

Sales Price
\$784,080.00

For additional info contact: Ken West
cell: 601-549-4240 email: krwi@aol.com

All data is believed to be correct but is not guaranteed and should be verified by interested parties.